



First Development Corporation

PROUDLY PRESENTING
Field Dale Subdivision



11 LOT SUBDIVISION FOR SALE

PALATINE ADDRESS ROLLING MEADOWS TAXES

FREMD HIGH SCHOOL

BUY INDIVIDUAL OR MULTIPLE LOTS

6316 N. Northwest Highway • Chicago, Illinois 60631-1696 • Phone (773) 775-5005 • Fax (773) 775-9684

E-mail: FDC@firstdevelopment.com • Website: www.firstdevelopment.com

FIELD DALE SUBDIVISION

**A SPECIAL OPPORTUNITY AT THE
PERFECT TIME TO BUY**

- ◆ **LOCATION! LOCATION! LOCATION!**
- ◆ **11 SUBDIVIDED LOTS WITH SEPERATE PIN NUMBERS**
- ◆ **PRIME UPSCALE AREA ON A QUIET STREET WITH TRANQUIL VIEWS**
- ◆ **PERFECT PALATINE LOCATION FOR A *CUSTOM DREAM HOME***
- ◆ **LEVEL LOTS RANGING FROM 10,117 SF TO 13,746**
- ◆ **LARGE, FLAT BUILDING PADS FOR *ESTATE SIZED HOMES***
- ◆ **CUL-DE-SAC AND RECTANGULAR LOTS AVAILABLE**
- ◆ **SEVERAL LOTS IDEAL FOR A SPRAWLING RANCH HOME**
- ◆ ***SIDEWALKS, CURBS, CUL-DE-SAC AND LIGHTING COMPLETE***
- ◆ **GAS*ELECTRIC*PHONE*CALBE*WATER*SANITARY & STORM SEWERS
HAVE BEEN BROUGHT TO EACH LOT!**
- ◆ **SOUGHT AFTER *FREMD HIGH SCHOOL* DISTRICT**
- ◆ ***PALATINE PARKS AND SCHOOLS* WITH ROLLING MEADOWS TAXES**
- ◆ **CLOSE TO MAJOR ROADS, HIGHWAY & SHOPPING**

DON'T MISS OUT ON THIS IDEAL PROJECT!

FIELD DALE SUBDIVISION

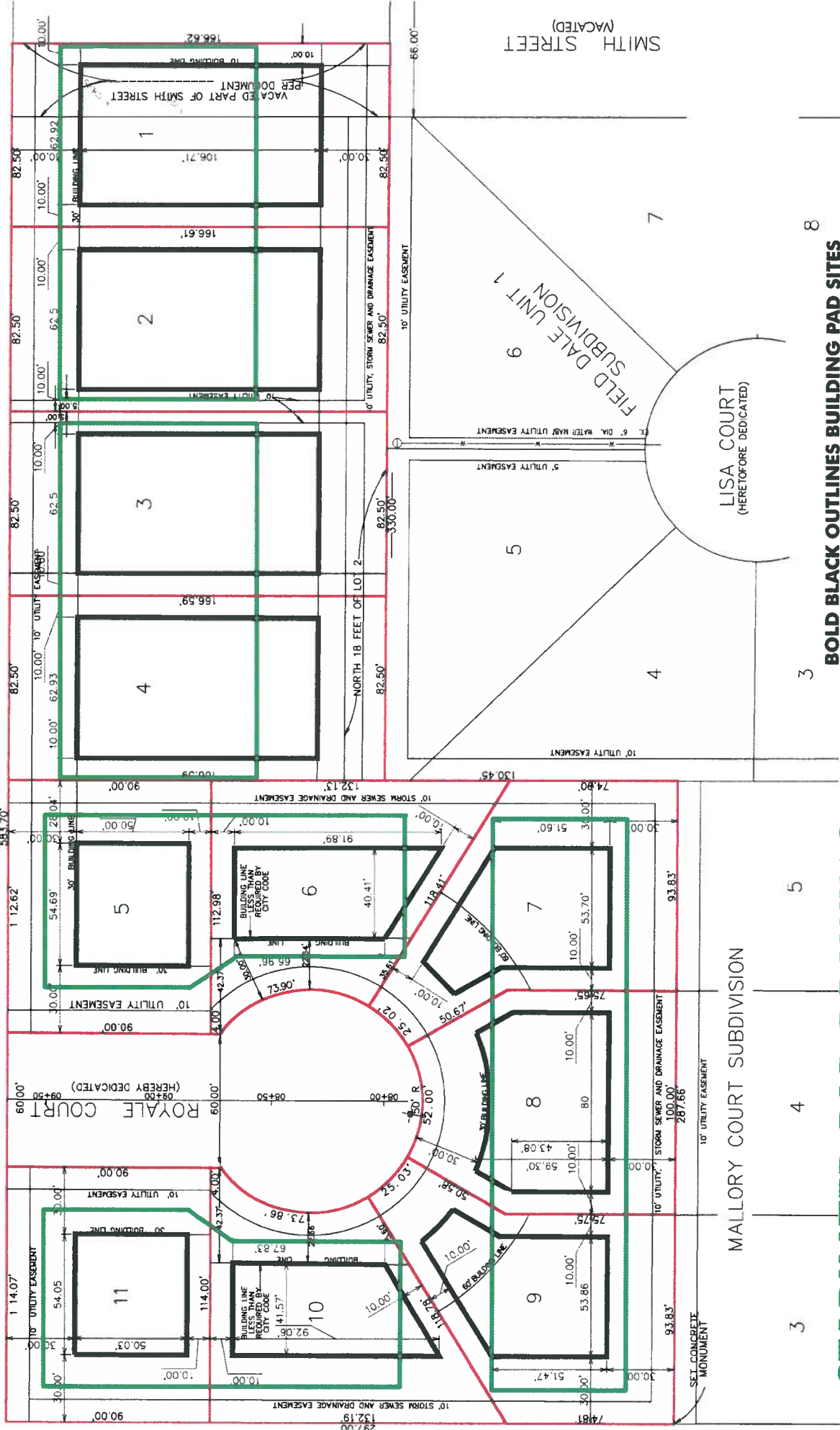
LIMITED TIME DISCOUNTED PRICING SHEET

11 LOT SUBDIVISION ~~\$3,600,000~~ **\$3,400,000**

INDIVIDUAL LOT PRICES

LOT #	SIZE	ADDRESS	PRICE
1	13,746 SF	5101 DUPONT	\$399,000 \$375,000
2	13,746 SF	5111 DUPONT	\$399,000 \$375,000
3	13,744 SF	5121 DUPONT	\$399,000 \$375,000
4	13,744 SF	5131 DUPONT	\$399,000 \$375,000
5	10,151 SF	2300 ROYALE CT.	\$310,000 \$290,000
6	10,035 SF	2302 ROYALE CT.	\$285,000 \$270,000
7	10,482 SF	2304 ROYALE CT.	\$330,000 \$310,000
8	10,635 SF	2307 ROYALE CT.	\$399,000 \$375,000
9	10,513 SF	2305 ROYALE CT.	\$330,000 \$310,000
10	10,117 SF	2303 ROYALE CT.	\$285,000 \$250,000
11	10,263 SF	2301 ROYALE CT.	\$310,000 \$290,000

Field Dale Unit 2 Subdivision - Rolling Meadows, Illinois



BOLD BLACK OUTLINES BUILDING PAD SITES
BOLD GREEN OUTLINES STABILIZED PAD AREAS
RED OUTLINES PROPERTY LINES

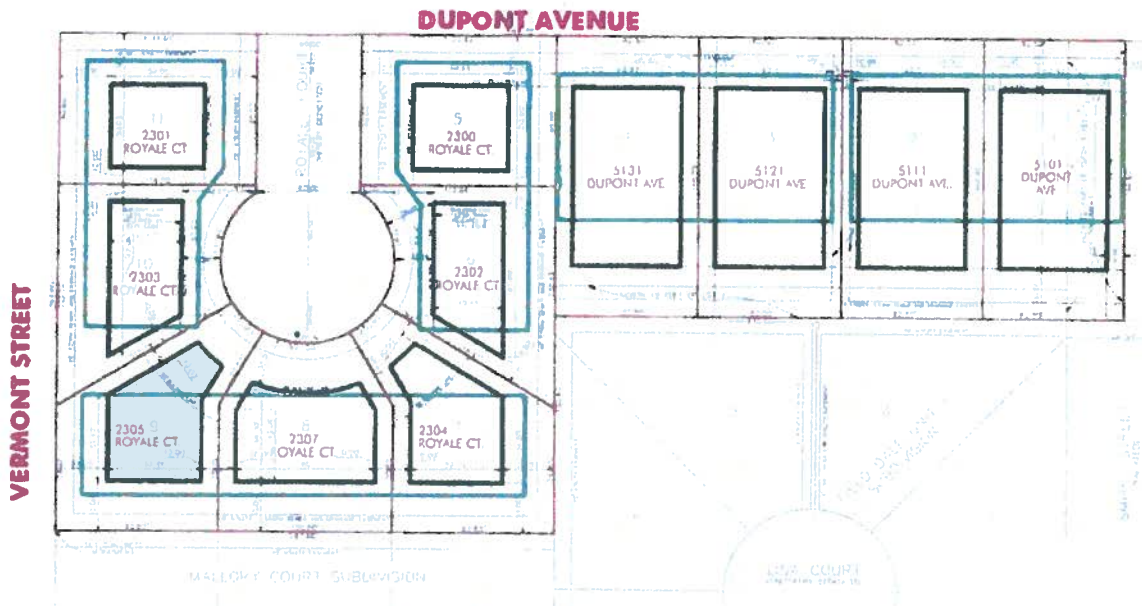
STABILIZED PAD DRAWING



First Development Corporation

SF LOTS FOR SALE Rolling Meadows, Illinois

(AT THE SOUTHEAST CORNER OF VERMONT AND DUPONT AVENUES, WEST OF PLUM GROVE ROAD, SOUTH OF EUCLID)



GOLD BLACK OUTLINES BUILDING PAD SITES
GOLD GREEN OUTLINES STABILIZED PAD AREAS
RED OUTLINES PROPERTY LINES

- VISIT -
WWW.FDCHOMES.COM

LOT - SUBDIVISION FEATURES

- Lot Sizes From 10,039 SF to 13,745 SF
- Fremd H.S. District #211 & Grade School District #15
- All Lots Have a Palatine Mailing Address
- Located Less Than 1 Mile From Rt. 53
- Local Shopping Nearby
- Quiet, Secluded, Upscale Neighborhood
- Large Building Pad Areas
- Sites Are at or Near Finished Grade
- Storm, Sanitary, & Water Service Installed
- Electric, Natural Gas, Telephone, & Cable Onsite
- All Sidewalks, Curbs, Gutters & Paving Are Completed
- All Lots Designed to Accept 10FT Basements
- All Lots Fully Improved & Ready For New Home Construction!

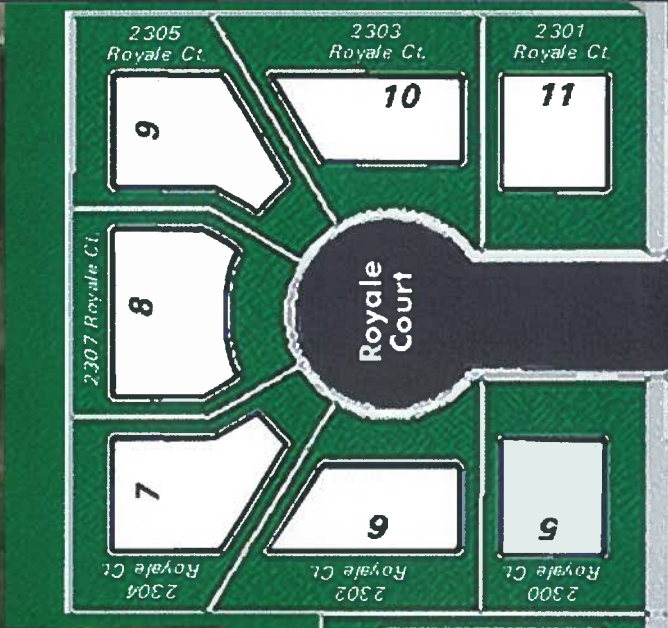
LOTS NOW AVAILABLE FOR PURCHASE

LOT PRICES REDUCED!!!!

Lot#	Lot Size*	Price	Address
1	13,746 SF	\$375,000	5101 Dupont Ave.
2	13,745 SF	\$375,000	5111 Dupont Ave.
3	13,744 SF	\$375,000	5121 Dupont Ave.
4	13,743 SF	\$375,000	5131 Dupont Ave.
5	10,151 SF	\$290,000	2300 Royale Ct.
6	10,035 SF	\$270,000	2302 Royale Ct.
7	10,482 SF	\$310,000	2304 Royale Ct.
8	10,635 SF	\$375,000	2307 Royale Ct.
9	10,513 SF	\$310,000	2305 Royale Ct.
10	10,117 SF	\$270,000	2303 Royale Ct.
11	10,263 SF	\$290,000	2301 Royale Ct.

BUILD YOUR DREAM HOME NOW!
FULLY IMPROVED SINGLE FAMILY LOTS
ROLLING MEADOWS/PALATINE

Vermont Street



DuPont Avenue



DIRECTIONS TO FIELD DALE 2 SUBDIVISION, ROLLING MEADOWS, IL.

FROM CHICAGO: Take I-90 West and proceed toward IL-53 North. Merge onto IL-53 North toward Rolling Meadows approximately 1.5 miles to KIRCHOFF BLVD. Exit and turn left onto KIRCHOFF BLVD. Approximately 1 mile west, KIRCHOFF BLVD. becomes DUPONT AVE after PLUM GROVE ROAD intersection. Proceed 2 blocks on DUPONT AVE. FIELD DALE 2 Subdivision is on the left.

FROM WEST SUBURBS: Take I-90E and proceed toward IL-53N. Merge onto IL-53 North toward Rolling Meadows approximately 1.5 miles to KIRCHOFF BLVD. Exit and turn left onto KIRCHOFF BLVD. Approximately 1 mile west, KIRCHOFF BLVD. becomes DUPONT AVE after PLUM GROVE ROAD intersection. Proceed 2 blocks on DUPONT AVE. FIELD DALE 2 Subdivision is on the left.

FROM SOUTH SUBURBS: Take I-55 North towards Chicago. Merge onto I-355 North towards West Suburbs. I-355 North becomes I-290 West. Proceed on I-290 West 5.5 miles until it becomes I-53 North. Proceed on IL-53 North toward Rolling Meadows approximately 1.5 miles to KIRCHOFF BLVD. Exit and turn left onto KIRCHOFF BLVD. Approximately 1 mile west, KIRCHOFF BLVD. becomes DUPONT AVE after PLUM GROVE ROAD intersection. Proceed 2 blocks on DUPONT AVE. FIELD DALE 2 Subdivision is on the left.

FROM I-53 SOUTH: Take I-53 South to EUCLID AVE. Exit West on EUCLID AVE. to SMITH STREET approximately 1.2 miles. Turn Left on SMITH STREET. SMITH STREET ends at DUPONT AVE. Property is on South side of DUPONT AVE.

